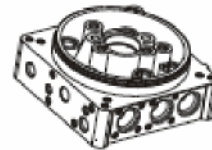


Elektromotoren DC und Übersicht der Zentralflansche

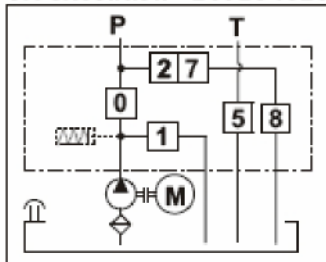
2.1: DC motor options

PPC code	Description	Spare part code	Mounting advise
/S150 12DC 80 /S150 24DC 80	Starting switch 150A 12 or 24V DC	M47SC0001+M47SK0801 M47SC0002+M47SK0801	For ø80 motors
/S150 12DC 112 /S150 24DC 112	Starting switch 150A 12 or 24V DC	M47SC0001+M47SK1121 M47SC0002+M47SK1121	For ø112 motors
/S200 12DC /S200 24DC	Starting switch 200A 12 or 24V DC	M47ZC0001 M47ZC0002	For ø125 and ø151 motors
P0201	Remote wired control with two buttons and 3m cable	P0201	For single acting cylinders
P0202	Remote wired control with two buttons and 3m cable	P0202	For double acting cylinders
F16000001	DC motors plastic cover	F16000001	For ø112 motors

3: Universal Central manifold (See section U040.10)



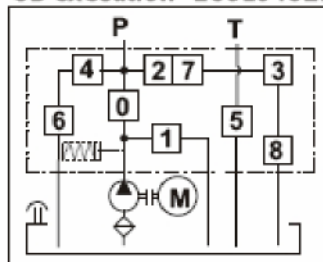
UA execution E60104020



Typical applications:

- single acting circuits;
- double acting circuits (with cetop3 valves, bancable solenoid valve);
- HI-LO pumps.

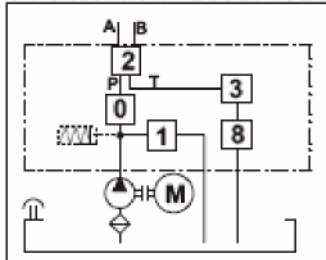
UB execution E60104021



Typical applications:

- as UA type plus:
- integral emergency hand pump, adjustable flow control valve on return line and/or complex controls.

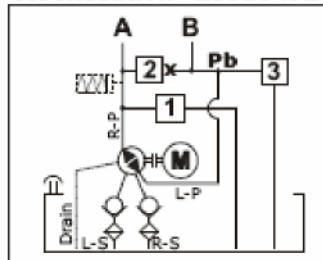
U4 execution E60104022



Typical application:

- double acting circuit with integrated 4-way solenoid cartridge valve

UR execution E60104023



Typical application:

- double acting cylinder with reversible pump to the use avoid directional valve.

Central manifold codes do not include valves and other components.